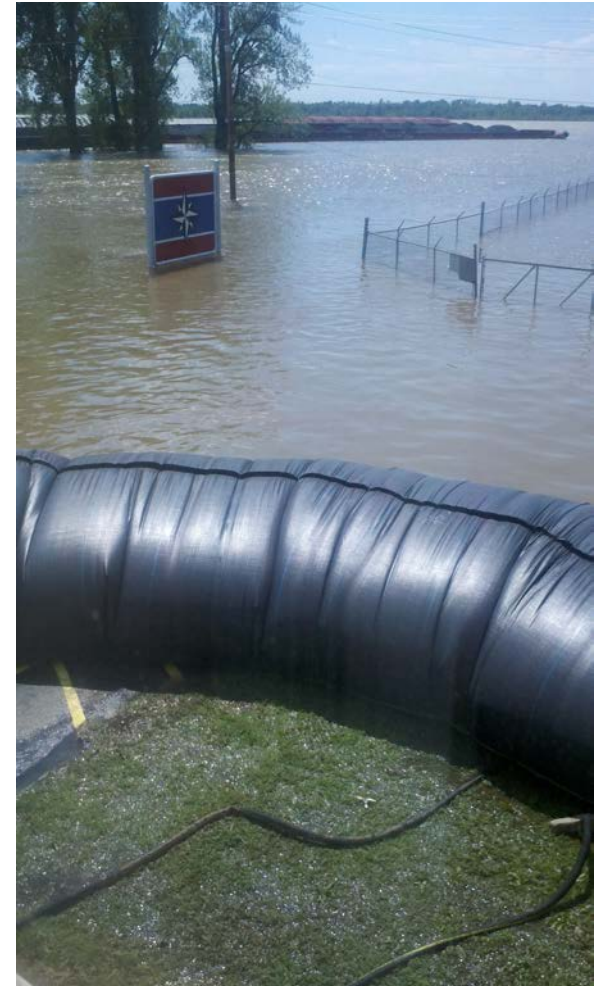


AquaDam: Water Controlling Water



Outside

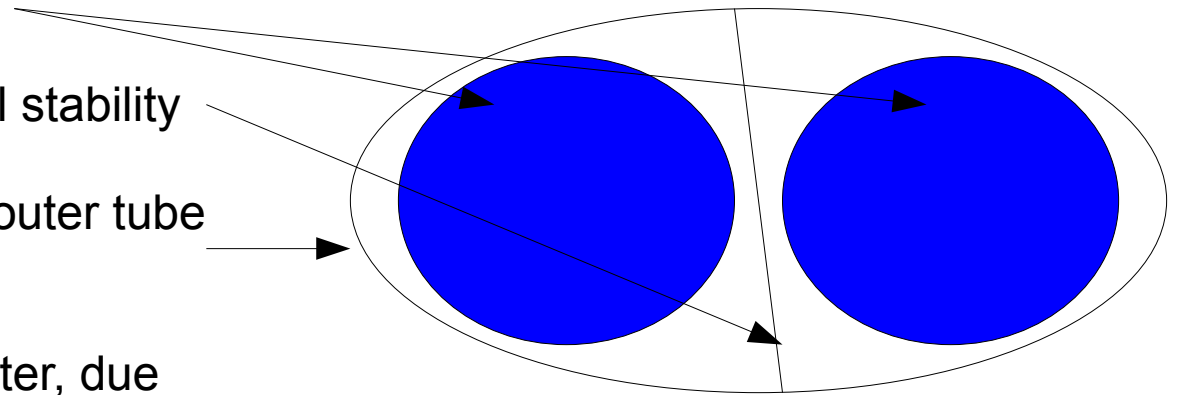


Inside

Aqua Dam Inc.
121 Main St.
Scotia, CA 95565
1.800.682.9283
www.aquadam.net

How AquaDams Work

- Dual internal water columns
- Internal baffle skirt for additional stability
- Woven geotextile polyethylene outer tube for maximum strength
- No contamination of internal water, due to use of inert polyethylene tubing



Front view



Top Down view

Water is pumped into the tubing extending from the open end of the outer tube, called fill-tubes. Fill-tubes must be elevated above the maximum height of the AquaDam.

The internal tube is U-shaped, allowing water to flow from side to side

Flood protection

Fort Calhoun
Nuclear Power
Plant - 2011



Flood protection in North Dakota - 2010

Homes and other buildings can be completely isolated from flood water through the use of AquaDams



Home to be protected



Unwrapping the AquaDam



Unrolling the AquaDam



Turns are made while unrolling



The start and end of the AquaDam use a connection collar to form a continuous floodwall



The 4' tall AquaDam is fully inflated.
Elapsed time: 2 hours